



Broomfield & District

Newsletter June 2026

GROUPS:

- Art Appreciation
- Badminton
- Beer Appreciation
- Board Games
- Book Group
- Bus Pass
- Gardening
(with Chelmsford u3a)
- Canasta
- Film and Theatre
- Geology
- Health Matters
- Lacemaking
- Photography
- Scrabble
- Strolling in Nature
- Table Tennis
- Tai Chi
- Ten-pin Bowling
- Ukulele
- Walking

WEBSITE

<https://broomfield.u3asite.uk/>

EMAIL

broomfieldanddistrictu3a@gmail.com

Chair's Chat

Hope you had a lovely Bank Holiday weekend. For once the weather was kind to us albeit 'scorchio' as Carol Kirkwood would say.

Our speaker last month was brilliant, I wondered why we had so many come to our meeting. I hoped it was me but I soon realised you knew Tony Tuckwell and he gave us a fascinating talk – 'The only coastal way is Essex'. We must get him back next year.

This month's speaker on 10th June is Siobhan Pearce – 'From Clown to Corporate'. Siobhan talks about being a children's entertainer then going into the corporate world. 'Was it easier working with Adults or Children?'

The Committee are now looking towards the Broomfield Village Hall Summer Fayre and Garden Show on Sunday 12th July. We have a stall advertising U3a and are looking for anyone willing to help on the day for a short time or longer if possible. Please speak to the Committee if you can help. We have asked the Group leaders to ask their members to bring or show something relating to their group.

It would be lovely if any of you could write a short piece about your u3a. What made you join? How did you hear about u3a? What you get out of it? Would you recommend it to friends and family? Maybe some ideas you may be able to use. Up to 100 words would be perfect. You will find cards on the tables and pens for you to write something while you have your tea.

After many years Pat and Carol sadly feel they are no longer able to provide refreshments for the meetings. Therefore, we are looking for volunteers. The main role will be making tea/coffee at the beginning of the meeting. If you are happy to help then please speak to me or one of the Committee. If we get a few people willing to help then we might be able to set up a rota so you are not committed every month.

If no-one comes forward then, unfortunately, we will no longer be able to provide refreshments at future meetings.

Looking forward to seeing you at our next meeting.

Heather Bourdon

MONTHLY MEETINGS

Please note: the Meeting is open and refreshments are available from 1.45pm – please bring your own cup if you can. The speaker is scheduled to start at 2:15pm.

Please ensure you have confirmed to Peter Radford that you wish to attend, no later than midday on the Tuesday before the meeting.

Raffle proceeds continue to be a great help towards covering (increased) hall hire charges.

Meeting Schedule – 2026

| Date | Title | Speaker |
|---------------|--|-------------------|
| 10th June | From Clown to Corporate | Siobhan Pierce |
| 8th July | Claudius' Conquest of Britain AD43 (Romans) | Richard Bale |
| 12th August | Social + Quiz | none |
| 9th September | When the Kite builds... WHY and HOW we restored Red Kites across Britain | Mike Pienkowski |
| 14th October | An Epidemic of Uncertainty: Rumours, conspiracy theories & Vaccine hesitancy | Dr Kevin Bryant |
| 11th November | From Simon Cowell to Dragon's Den | Danielle Barnette |
| 9th December | A Beginning, a Muddle and an End. Where do novelists get their ideas from? | Bobbie Derbyshire |

Calendar for June and July 2026

(Times, locations and contact details can be found in the individual Group reports.
 Entries in *italics* need to be confirmed.)

| | Monday | Tuesday | Wednesday | Thursday | Friday | Saturday | Sunday | |
|---|--------------------------------|-------------------------|---------------------------|--|--------------------------------|----------|--------|------|
| June | 1 | 2 | 3 | 4 | 5 | 6 | 7 | June |
| | Badminton Canasta | Board Games | Ten-pin | Ukulele | Lacemaking Tai chi | | | |
| | 8 | 9 | 10 | 11 | 12 | 13 | 14 | |
| | Beer Appreciation | Walking | Main Meeting | Table tennis | Art Appreciation Tai chi | | | |
| | 15 | 16 | 17 | 18 | 19 | 20 | 21 | |
| | Badminton Canasta | Strolling in Nature | Film & Theatre Ten-pin | Photography Ukulele | Lacemaking Tai chi | | | |
| 22 | 23 | 24 | 25 | 26 | 27 | 28 | July | |
| Badminton | Geology Scrabble | | Bus Pass Table tennis | Health Matters Lacemaking | | | | |
| 29 | 30 | 1 | 2 | 3 | 4 | 5 | | |
| Badminton Book Group | | Ten-pin | Ukulele | Lacemaking Tai chi | | | | |
| 6 | 7 | 8 | 9 | 10 | 11 | 12 | | July |
| Badminton | | Main Meeting | Table tennis | <i>Art Appreciation</i> Lacemaking Tai chi | | | | |
| 13 | 14 | 15 | 16 | 17 | 18 | 19 | | |
| Badminton <i>Beer Appreciation</i> | <i>Walking</i> | Ten-pin | <i>Photography</i> | Bus Pass Lacemaking Tai chi | | | | |
| 20 | 21 | 22 | 23 | 24 | 25 | 26 | | |
| Badminton | <i>Strolling in Nature</i> | | Table tennis | Lacemaking | | | | |
| 27 | 28 | 29 | 30 | 31 | 1 | 2 | August | |
| Badminton Book Group | Scrabble | | | Lacemaking | | | | |

Notes and Notices, June 2026

To Start With...

Have you had your Spring COVID Vaccination? I must admit we were a bit late but last week the Vaccination Centre at Melbourne Parade was still operating and not very busy. If you are 75 or over (or have a weakened immune system) vaccination is free. More details can be found by telephoning 119 or going to <https://www.nhs.uk/vaccinations/covid-19-vaccine/>. Other walk-in centres can be found by going to <https://www.nhs.uk/covid-walk-in>.

The last date you can get your vaccination is 30 June 2026.

Talks

The next meeting of the Essex Branch of the Historical Association will not be until Saturday 19th September. More details of this nearer the time but, if you are impatient, go to:

<https://www.essexbranchha.com/>

Gresham College also has its Summer break coming up but it has some interesting talks in June. My arbitrary selection of these is: "The Shape of Knots: From DNA to Shoestrings and Solar Flares", Alain Goriely (Tuesday 9th); "There Must be a Better Way: Thoughts on the Future of Family Law", Sir Andrew McFarlane (Monday 15th); "The Death of the Roman Republic?", Melissa Lane (Thursday 18th); "Music of Sleep and Dreams", Milton Mermikides (Friday 19th); and "On the Nature of Time According to Modern Physics", Jim Al-Khalili (Tuesday 23rd).

More details of these and other talks are at: <https://www.gresham.ac.uk/whats-on?see-all/>

The Tumble Dryer 'Ban'

There are proposals for a 'ban' on certain types of tumble dryer: what does it mean for you?

Which? explains which type of tumble dryers are affected, why phasing out inefficient models is a good thing, and what it means for consumers. See

<https://www.which.co.uk/news/article/the-tumble-dryer-ban-what-does-it-mean-for-you-a1PRI3r8KXPx>

Have You Got Invasive Plants in Your Garden?

Could invasive plants be devaluing your home? A well-kept garden can help sell a home, but some plants may leave buyers thinking twice. But invasive plants such as Japanese knotweed can affect property values and create extra challenges for buyers and sellers. Which? looks at how Japanese knotweed can affect house sales, what lenders make of it and the other plants buyers may want to watch out for. See

<https://www.which.co.uk/news/article/could-japanese-knotweed-affect-your-homes-value-aTcwZ2a6btUi>

Pet Insurance

Shocked by a £700 insurance bill for her two dogs, Jenny Ross takes a closer look at why cover has skyrocketed and explains the different tactics she's trying to pay less. See

<https://www.which.co.uk/news/article/ive-spent-a-small-fortune-on-my-dogs-but-a-700-insurance-bill-is-hard-to-stomach-a5cOs9V9OMPq>

and finally...

A last reminder about Great Dunmow's "BookFest". Saturday 13th June,

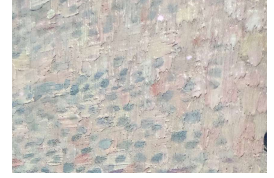
<https://www.talliston.com/great-dunmow-bookfest>

BROOMFIELD & DISTRICT U3A – GROUP REPORTS

ART APPRECIATION



In May, we visited the Seurat by the Sea exhibition at the Courtauld Institute, Somerset House and enjoyed a rare opportunity to examine the pointillist technique at close quarters.



Next meeting is scheduled for June 12th, at 1.00 at The Pavilion, South St. Great Waltham, where we'll be reflecting on what we saw, and taking a look at the 19th/early 20th century Russian master, Ilya Repin.

For more info or if you'd like to join the group contact me.

Glynn Wadeson

BADMINTON

The badminton dates for the next two months are as follows.

- For June the dates are 1st, 15th, 22nd and 29th. There will be no badminton on 8th June.
- For July the dates are 6th, 13th, 20th and 27th.

12:00 noon – 1:00pm at the Sports and Athletics Centre, Melbourne.

Maxine Martin

BEER APPRECIATION

My thanks to Steve for standing in whilst I was elsewhere. A stalwart three met at The Ale House in Viaduct Road for the Group's May meeting. Given there were eight Cask Ales and eleven Keg beers on offer it was a bit of a tall order expecting us to try them all. There was a good range from Leigh On Sea brewery and four of their ales were sampled. A rare excursion West took in the Bristol Beer Co's Trick Play. Conversation flowed well as usual, with a particular emphasis on the shared craving for a Sunday Roast.

For our June foray we will try a new venue, proposed by a member of the Group, we will visit The Two Brewers at the foot of Springfield Road (opposite Tesco's) at 2.00pm on Monday 8th June 2026.

Look forward to seeing you. As ever please let me know if you are coming.

Malcolm Taylor

BOARD GAMES

We will be meeting for an afternoon of Board Games on the following dates in The Globe, Rainsford Road at 1.30 pm: Tuesday, 2nd June and Tuesday, 7th July.

If you are interested in joining us please contact one of us for details.

Barbara Bartlett

Carol Greatrex

Lorna Stuart

BOOK GROUP

At our May meeting we discussed *The Seventh Son* by Sebastian Faulks, which was agreed to be a very disturbing read, score 4.5 out of 10.

The Book Group will next meet on Monday 29th June at Broomfield Library at 2.30pm where we will discuss *The Last Runaway* by Tracy Chevalier.

If you would like to join the Book Group, please contact me on the email address below.

Christine Pearson

BUS PASS

We spent a lovely day in Wivenhoe at the start of May and at the end of the month we visited Burnham-on-Crouch.

On **Thursday** 25th June, we head to the outskirts of Harlow to see Harlow Museum and Walled Gardens. Learn more about the history of Harlow, the influential people who lived there, see the historic collection of cycles, and explore two acres of gardens divided into three distinct areas.

More recently the bus group has had just one visit each year when we have travelled by train. After consultation with members of the group, we have decided to do more train travel to reach more distant places of interest without the need to drive. The majority of trips will still involve bus travel but on Friday 17th July we shall travel by train to Woodbridge in Suffolk. Further details to those on the mailing list in due course.

Carol Greatrex

CANASTA

The Canasta Group, meets on the 1st and 3rd Mondays of each month. This is for information only as we are full and I cannot accept anyone else into the group.

Marie Mackie

FILM AND THEATRE

On Monday 11th May we went to East London for an Alfred Hitchcock Walking Tour in Leytonstone. Over about two hours, we walked in Hitchcock's footsteps and discovered locations connected to his childhood and formative experiences: his birthplace, his first school, his favourite pub, and the cinemas he enjoyed. We also heard about dramatic moments from that time including the site of a WWI air raid he survived, and the police station where he was briefly locked up as a child—an experience often linked to his lifelong fascination with authority, fear, and guilt.

Gary, our guide, was very knowledgeable and had, obviously, done extensive research which added to the walk with rare photos of Hitchcock and his early life. The area was a homage to Hitchcock: there were murals, paintings and estates named after different films. There was a building near his Dad's greengrocers – now a BP petrol station! – with birds painted on the outside. One of which had a mini cameo of Hitchcock in its eye.

A very enjoyable and fascinating day.

Our next meeting is on 17th June at The Angel at 2:00pm, everyone welcome. If you are interested in joining the group, please ring me.

Heather Bourdon

GARDENING

Little Waltham Gardening Club is now visiting gardens on the first Wednesdays of June, July (Markshall) and August (Ulting Wick).

I believe Chelmsford u3a are also visiting gardens but on the fourth Thursdays – I do not have any more information about these visits.

If anyone wants contact details, please get in touch with me.

Pat Radford

GEOLOGY

At our last session, one of our members took up the challenge to answer the question 'Where does water come from?' This involved an understanding of geological time or rather cosmological time! Where did water come from - well basically it was in the stuff of Earth from the start and sweated out by various geological processes to fill the oceans as now.

It was augmented from meteorites a bit later. These meteorites during the Late Heavy Bombardment also hit the Moon, but there is no water on the Moon, except perhaps some ice near the south pole in a hollow on the dark side, as the pressure is too low and the temperature too high for water to be retained. To backup the theory we also looked at various rocks and minerals that contain water within their structure.

PHOTOGRAPHY

Whether you own a camera or a camera phone there's a good chance you can get more out of it than you might be aware. Join our group and learn ways to improve your creativity and technical skills in a friendly and relaxed environment.

We meet at Little Waltham United Reformed Church from 10-12 on the third Thursday of each month. Next meeting is 18th June.

For more info, or if you'd like to join, contact me.

Glynn Wadeson



SCRABBLE

We will be meeting on the following dates in The Globe, Rainsford Road, at 1.30 pm.

Tuesday, 23rd June and Tuesday, 28th July.

New members are always welcome, please contact me for details.

Barbara Bartlett

STROLLING IN NATURE

The Strollers met in Writtle on 19th May. Unfortunately, the weather was very wet so we had a coffee and a chat.

Next month we are going to Heybridge on 16th June. Details nearer the time.

If anyone would like to join us please contact me.

Sue Browning

TABLE TENNIS

Table tennis will be on 11th June, 25th June, 9th July and 23th July at 11.00 at Chelmsford Sports Centre, Melbourne. Cost will probably be £2.50 a session.

New members are very welcome to this fun and friendly group.

Pauline Vinter

TAI CHI

In June, our dates are: 5th, 12th and 19th.

In July, our dates are: 3rd, 10th and 17th.

Cheryl Beeney

TEN-PIN BOWLING

Ten Pin bowling takes place on the 1st & 3rd Wednesday of the month at City Bowls, Rivermead Industrial Estate near Anglia Ruskin University. We play 2 games, the cost is £8, this includes bowling, shoe hire & coffee/tea. We bowl at 10:30am but request bowlers arrive by 10:15am so we can arrange lanes, shoes etc. Looking forward to seeing you all there.

The dates for the next 2 months are:

- June 3rd and 17th
- July 1st and 15th

Lorna Stuart

BROOMFIELD UKULELE GROUP (BUGS)

The Ukulele group will meet on June 4th at Jan's house and on June 18th at Jennie's house. We are meeting at Pat's house on July 2nd but will not meet to play on the 16th.

If anyone would like to join our group please contact Pat for the relevant addresses. We are a friendly group who have been together for 10 years but we welcome newcomers and are happy to start non-players off with some basic chords, if you wish to give it a go. We meet between 2:00pm – 4:00pm and generally sing well known songs if you just like singing.

Pat Platt

WALKING

My thanks to David and Roger for leading the Group's May walk around the "Three Parishes". A pleasant meander in the local area, linking Little Waltham, Great Waltham & Broomfield. A great time was had by all, as can be seen from the associated photograph.

Our June walk will be shorter than usual (3½ miles) enabling us to spend more time savouring the surrounding area and its wildlife. We will be walking a stretch of the King Charles III Coastal Path, coincidentally part of the Salt Coast Path, as we walk along the old sea defences alongside the River Crouch. We will be walking within parts of the EWT Blue House Farm reserve, so plenty of birdlife, sheep (and a few of bovine quadrupeds!).



Lunch will be taken at the Ferry Boat Inn – **please note it is a cashless venue!**

We will meet in the Broomfield Royal British Legion car park in Saxon Way at 10.00am on Tuesday 9th June 2026. Please let me know if you are coming.

The usual mobile will be operative on the day.

Malcolm Taylor

GROUP LEADERS

| | |
|-------------------|--|
| Art Appreciation | Glynn Wadeson |
| Badminton | Maxine Martin |
| Beer Appreciation | Malcolm Taylor |
| Board Games | Barbara Bartlett Carol Greatrex Lorna Stuart |
| Book Group | Christine Pearson |
| Bus Pass | Carol Greatrex |
| Canasta | Marie Mackie |
| Film and Theatre | Heather Bourdon |
| Gardening | Pat Radford |
| Geology | Ros Mercer |
| Health Matters | Gill Sturman |
| Lacemaking | Wendy Talley |
| Natural History | Sue Browning |
| Photography | Glynn Wadeson |
| Scrabble | Barbara Bartlett |
| Table Tennis | Jean Lock Pauline Vinter |
| Tai Chi | Cheryl Beeney |
| Ten-pin Bowling | Lorna Stuart |
| Ukulele | Pat Platt |
| Walking | Malcolm Taylor |

New Group Leaders needed!

Any proposals for new groups?

**Contact the editor for inclusion in next month's newsletter *or*,
if you'd like to talk it over first, please contact one of the committee.**

THE COMMITTEE

| | | |
|------------------------|-----------------|---|
| Chair | Heather Bourdon | - |
| | | - |
| Vice Chair & Secretary | Roger Warner | - |
| | | - |
| Treasurer | Sue Blamire | - |
| | | - |
| Speaker Coordinator | Lynne Blackburn | - |
| | | - |
| Membership Secretary | Peter Radford | - |
| | | - |
| Group Coordinator | Mike Farn | - |
| | | - |
| | Julie Warner | - |
| | | - |

Many thanks to David Warner for acting as Website Editor